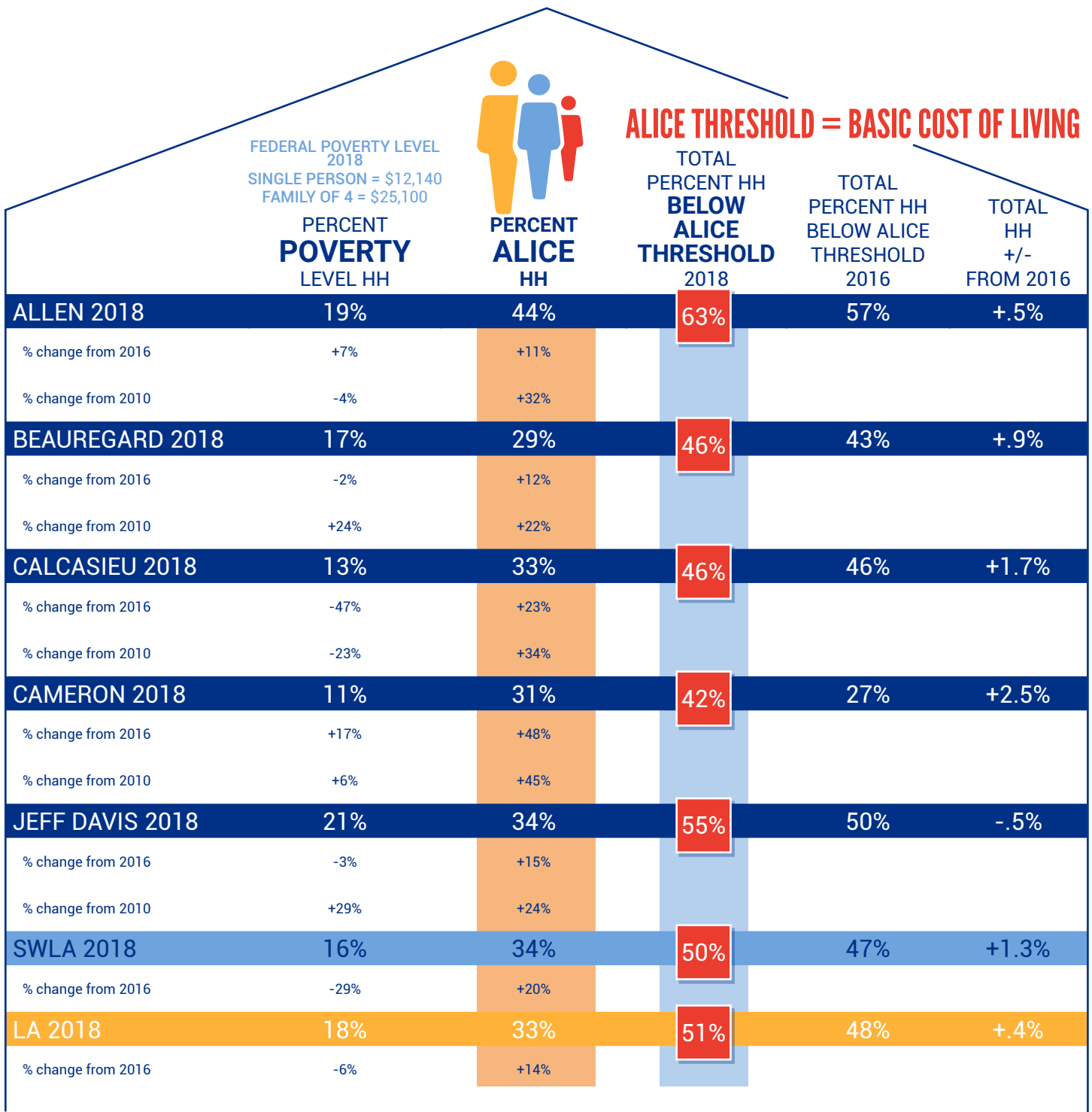




A.L.I.C.E.

United Way
of Southwest Louisiana

Asset Limited | Income Constrained | Employed



UNITED WAY OF SOUTHWEST LOUISIANA IS TACKLING THE PROBLEMS OF THE WORKING POOR.



A.L.I.C.E.

United Way
of Southwest Louisiana

Asset Limited | Income Constrained | Employed

HOUSEHOLD SURVIVAL BUDGET FOR FAMILY OF 4	ALLEN	BEAUREGARD	CALCASIEU	CAMERON	JEFF DAVIS	ALICE Essentials Index shows an annual 3.4% increase each year for the last decade.
HOUSING	\$680	\$680	\$791	\$801	\$680	HUD Fair Market Rent
CHILDCARE	\$1,069	\$1,069	\$1,282	\$1,069	\$1,069	Registered Family Childcare Homes
FOOD	\$759	\$813	\$834	\$805	\$832	USDA Thrifty Food Plan-only food eaten at home
TRANSPORTATION	\$850	\$850	\$850	\$850	\$850	Op Costs for a Car
HEALTHCARE	\$844	\$844	\$844	\$844	\$844	Employee Share of Insurance Plus Out-of-Pocket Costs
TECHNOLOGY	\$75	\$75	\$75	\$75	\$75	Lowest-Cost Smartphone Plan on Market
MISC	\$489	\$496	\$541	\$511	\$499	-CPI for the last decade only shows 1.8% rate of inflation.
TAXES	\$613	\$629	\$735	\$664	\$635	- Consumer Price Index (CPI) measures inflation by using the cost of all goods and services while the ALICE Essentials Index uses only those purchased by low-income homes.
MONTHLY TOTAL HHSB 2018	\$5,379	\$5,456	\$5,952	\$5,619	\$5,484	- Consumers at different income levels buy different things.
ANNUAL TOTAL HHSB FAMILY/4 2018	\$64,548	\$65,472	\$71,424	\$67,428	\$65,808	BY ONLY USING THE CPI to adjust Social Security and the Federal Poverty Level, benefits have not kept pace with the actual rate of inflation for lower income community members.
MEDIAN HH INCOME 2018	\$41,009	\$50,738	\$49,113	\$55,000	\$39,653	
Hourly Wage Required 2018	\$32.27	\$32.74	\$35.71	\$33.71	\$32.90	
MEDIAN HOURLY WAGE 2018	\$20.50	\$25.37	\$24.56	\$27.50	\$19.83	

The cost of basic household living increased 22% while the median household income decreased 2%

The cost of basic household living increased 23% while the median household income only increased 8%

The cost of basic household living increased 20% while the median household income only increased 6%

The cost of basic household living increased 20% while the median household income decreased 19%



The cost of basic household living increased 23% while the median household income only increased 1%



A.L.I.C.E.

United Way
of Southwest Louisiana

Asset Limited | Income Constrained | Employed

	 AVERAGE SENIOR SURVIVAL BUDGET 2018 \$27,000 HOUSEHOLD SURVIVAL BUDGET SINGLE 2018	 HOUSEHOLD SURVIVAL BUDGET FAMILY OF 4 2018	HOURLY WAGE NEEDED FOR HHSB18 FAMILY	MEDIAN HOURLY WAGE FOR FAMILY 2018	MEDIAN ANNUAL HOUSEHOLD INCOME 2018	WHAT IS NEEDED TO MEET THE HHSB FOR A FAMILY EARNING MEDIAN HHI?
ALLEN 2018 +/- FROM 2016	\$23,064 +18%	\$64,548 ▲+22%	\$32.27	\$20.50 ▼-2%	\$41,009	(\$23,539)
BEAUREGARD 2018 +/- FROM 2016	\$23,364 +19%	\$65,472 ▲+23%	\$32.74	\$25.37 ▲+8%	\$50,738	(\$14,734)
CALCASIEU 2018 +/- FROM 2016	\$22,428 +16%	\$71,424 ▲+20%	\$35.71	\$24.56 ▲+6%	\$49,113	(\$22,311)
CAMERON 2018 +/- FROM 2016	\$22,356 +16%	\$67,428 ▲+20%	\$33.71	\$27.50 ▼-19%	\$55,000	(\$12,428)
JEFF DAVIS 2018 +/- FROM 2016	\$23,472 +20%	\$65,808 ▲+23%	\$32.90	\$19.83 ▲+1%	\$39,653	(\$26,155)
LOUISIANA 2018 +/- FROM 2016	\$24,252 +19%	\$69,732 ▲+23%	\$34.87			