

# PARTNERS & INITIATIVES

2021

## PARTNER AGENCIES

United Way of Southwest Louisiana's funded and collaborative partners working on human services projects

## INITIATIVES

United Way of Southwest Louisiana's in-house programming designed to fill unaddressed critical needs

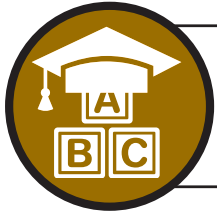


Long-term Change through Long-term Solutions



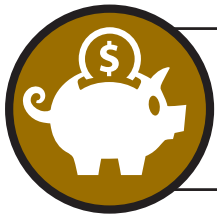
Southwest Louisiana

# THE 4 PILLARS



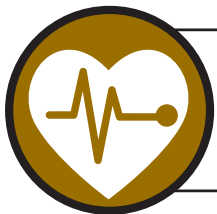
## EDUCATION

Our goal for students in Southwest Louisiana is a 96% high school graduation rate. We have five priority areas; [Early Childhood](#), [School Readiness](#), [Early Grade Reading Proficiency](#), [Middle School Transition](#) and [High School Success](#).



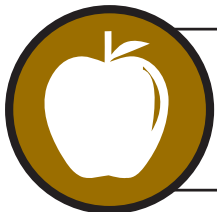
## ECONOMIC MOBILITY

Our goal for families and individuals in Southwest Louisiana is an unemployment rate of 3.5% or less. We have three priority areas; [Economic Mobility](#), [Workforce Development](#) and [Earnings](#).



## HEALTH

Our goal for individuals in Southwest Louisiana is a 10% overall increase in health ranking. We have five priority areas; [Healthy Beginnings](#), [Safe Home and Community](#), [Supporting Healthy Choices](#), [Independence](#) and [Healthcare](#).



## BASIC NEEDS

Our goal for individuals in Southwest Louisiana is to decrease the number of people dependent on assistance programs. We have two priority areas; [Crisis](#) and [Resources](#).

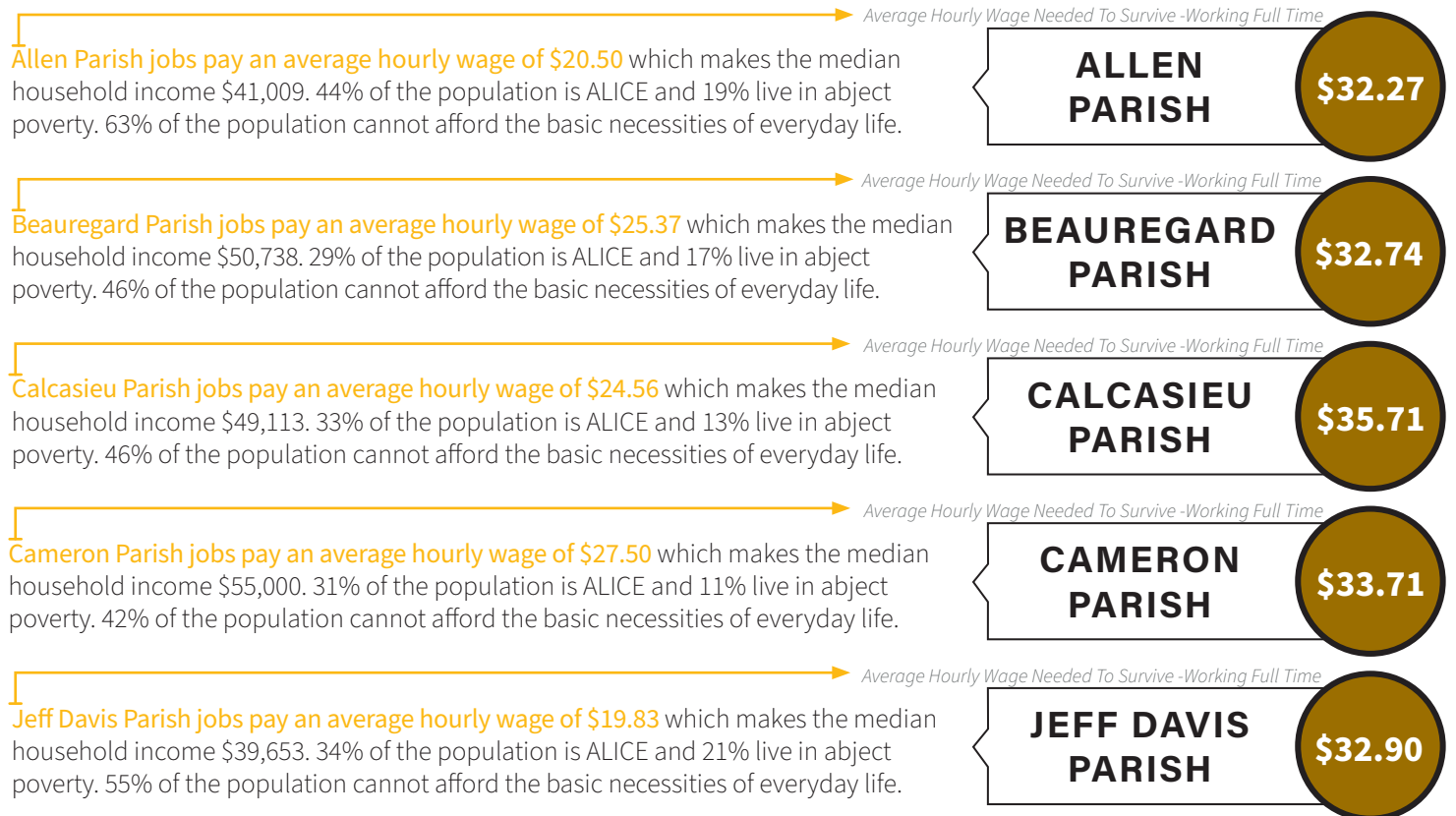
**All funds and activities must fall under at least one PILLAR**

United Way of Southwest Louisiana's [CORE WORK](#) is a focus on the above four building blocks to success. Long-term change for community members struggling is the goal. Everyone benefits when each individual in our community has what they need to succeed.

# ALICE & POVERTY

A.L.I.C.E. = Asset Limited, Income Constrained, EMPLOYED = The Working Poor

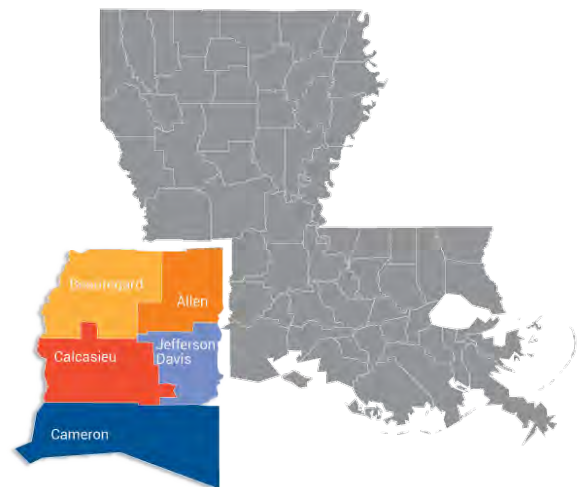
ALICE families are employed, but cannot meet the basic necessities of everyday life that the rest of the community considers essential. YET these same families, because they are employed, are unable to benefit from human services and programs that those living under the Federal Poverty Limit can take advantage of. The income for ALICE families has not kept pace with rising inflation for decades.



United Way of Southwest Louisiana's five-parish region serves more than 304,000 individuals.

We fight for the health, education, economic mobility and basic needs for every person in this community. Our goal is to create long-lasting changes that prevent problems from happening in the first place.

At the foundation of United Way of Southwest Louisiana's community impact work are the principles of **Collective Impact**.



# Partner Agencies



**United Way of Southwest Louisiana volunteers help partner, Catholic Charities of SWLA, clean up after May flooding.**

United Way of Southwest Louisiana uses multiple cutting-edge sources to keep its finger on the pulse of the community's needs. With the knowledge that an entire region thrives when each individual and family is healthy and prosperous, experienced team members monitor resources 24/7. The essential resource in the United Way arsenal is the 211 resource hotline, an Initiative where individuals can ask for assistance with anything from childcare to rent and utilities.

Using data from 211 callers allows United Way of Southwest Louisiana to direct critical resources where they are most requested. From this information, the team can build community investment strategies and fluidly move goods and services. Always beneficial, it is indispensable following natural disasters. Federal, state and local governments have come to rely on the information and utilize 211 to disseminate emergency assistance quickly.

# Grants

GRANT FUNDS COME FROM DONORS GIFTS AND STAY LOCAL

## Donations go exactly where they should go - to local and critical support

United Way of Southwest Louisiana utilized volunteers, experts in their chosen field, to operate a grant cycle annually. Funding falls under the four pillars and must address a need the team has deemed critical. The community investment volunteers vet each 501(c)(3) organization thoroughly to ensure alignment with the mission, vision and principles of United Way. Each organization must prove the ability to fulfill the request before receiving the donor's gifts.

The Board of Directors is ultimately responsible for how grant funds are expended annually.

United Way of Southwest Louisiana takes a donor's desire to entrust their gift to this nonprofit seriously. This team provides the best use and creates as much positive impact as is possible each day. The collective impact of many individuals giving of any size or type makes it possible for this team to have served 766,460 local residents in 2020.

- » ABRAHAM'S TENT
- » ASSIST AGENCY
- » BEAUREGARD ARC
- » BEAUREGARD COMMUNITY CONCERNS - JUNE JENKINS WOMEN'S SHELTER
- » BEAUREGARD COUNCIL ON AGING
- » BIG BROTHERS BIG SISTERS OF SWLA
- » BOYS & GIRLS CLUBS OF ACADIANA
- » CALCASIEU COMMUNITY CLINIC
- » CALCASIEU COUNCIL ON AGING
- » CATHOLIC CHARITIES OF SWLA
- » CHILDREN'S MUSEUM OF SWLA
- » FAMILY & YOUTH COUNSELING AGENCY
- » GIRL SCOUTS OF LA - PINES TO THE GULF
- » GIRLIE GIRLS MENTORING PROGRAM
- » IBERIA COMPREHENSIVE COMMUNITY CLINIC - MERRYVILLE
- » JEFF DAVIS CADA
- » JUNIOR ACHIEVEMENT OF SWLA
- » KAY DORE COUNSELING CLINIC
- » LITERACY COUNCIL OF SWLA
- » OASIS - A SAFE HAVEN
- » PROJECT BUILD A FUTURE
- » SECOND HARVEST FOOD BANK OF GREATER NEW ORLEANS
- » SOUTHWEST LOUISIANA YOUTH FOUNDATION
- » SALVATION ARMY
- » ST NICHOLAS CENTER FOR CHILDREN
- » SWLA CENTER FOR HEALTH SERVICES
- » VOLUNTEERS OF AMERICA GREATER BATON ROUGE

# Partner Agencies

## ABRAHAM'S TENT

Serves bag lunches Monday through Saturday for individuals in need

## ASSIST AGENCY

Assists low-income individuals and families with rent and utility bills, legal aid and food vouchers

## BEAUREGARD ARC

Provides opportunities structured toward employment for citizens with developmental disabilities in Beauregard Parish

## BEAUREGARD COMMUNITY CONCERNS

Operates the June Jenkins Women's Shelter which provides housing and services to domestic violence victims in Beauregard Parish

## CALCASIEU COMMUNITY CLINIC

Provides low-income, working individuals who are un or under-insured with healthcare and medications

## CALCASIEU COUNCIL ON AGING

Provides home-delivered meals, homemaker services, prescription and energy assistance programs for senior citizens in Calcasieu Parish

## CATHOLIC CHARITIES OF SWLA

Provides basic needs assistance and disaster response to residents in Allen, Beauregard, Calcasieu, Cameron and Jeff Davis parishes

## CHILDREN'S MUSEUM OF SWLA

Provides an educational and fun environment through hands-on programs and exhibits

## JEFF DAVIS CADA

Provides shelter, basic emergency needs and services to domestic violence victims in Jeff Davis Parish

## JUNIOR ACHIEVEMENT OF SWLA

Provides financial literacy instruction to students

## KAY DORE COUNSELING CLINIC

Provides affordable mental/behavioral health services and suicide prevention and education programs

## LITERACY COUNCIL OF SWLA

Provides instructional programs to improve educational skill levels

## SALVATION ARMY

Provides an emergency assistance program for food, clothing, rent and utility assistance as well as emergency shelter for men in Calcasieu Parish

## SECOND HARVEST FOOD BANK

Provides food distribution, advocacy, education and disaster response to local food pantries

## SWLA YOUTH FOUNDATION

Implements education programs for middle and high school students on human trafficking, relationship abuse and on-line solicitation

## ST NICHOLAS CENTER FOR CHILDREN

Provides therapeutic educational and social services to children with autism, developmental delays and neurological disorders

# conomic Mobility

## Measurable Results

### BEAUREGARD COUNCIL ON AGING

Provides home delivered or congregate meals, transportation to medical appts and social services for senior citizens in Beauregard Parish

### BIG BROTHERS BIG SISTERS OF SWLA

Helps children through professionally supported, one-to-one relationships with adult mentors

### BOYS & GIRLS CLUBS

Provides a safe after-school space with educational programs, games and character development experiences in Lake Charles

### FAMILY & YOUTH COUNSELING AGENCY

Provides affordable counseling, child advocacy, autism support and youth leadership experiences in Calcasieu Parish

### GIRL SCOUTS OF LA PINES TO THE GULF

Scholarships are provided to engage girls in activities, support academic success and foster leadership development

### GIRLIE GIRLS MENTORING PROGRAM

Provides girls with experiences to elevate self-esteem, gain confidence and learn problem-solving skills in Lake Charles

### MERRYVILLE COMMUNITY HEALTH CENTER

Provides comprehensive health services to residents in the Merryville area

### OASIS A SAFE HAVEN

Provides services including shelter and counseling for victims of sexual assault and domestic violence in Calcasieu Parish

### PROJECT BUILD A FUTURE

Promotes financial literacy through home-buyer counseling and affordable homes for working families in low income revitalization areas

### SWLA CENTER FOR HEALTH SERVICES

Provides quality, cost-effective and comprehensive primary healthcare and support services in Lake Charles

### VOLUNTEERS OF AMERICA

Provide community support for people with mental illness, housing for people with disabilities, outreach for homeless and adoption and pregnancy services

**United Way of Southwest Louisiana is an expert at identifying critical issues that need to be addressed in four focus areas: education, economic mobility, health and basic needs.**

**Creating lasting change is challenging and requires everyone to work together to be successful.**

# th Basic Needs

# INITIATIVES

**United Way of Southwest Louisiana has the ability to initiate projects independently in each of our four focus areas. These Initiatives address important community needs not already being met and fall into the four focus areas. Donations and volunteers are behind the success of each one.**

## SWLA VOAD

Volunteer Organizations Active in Disaster - Provides a place where governmental, faith-based and non-profit organizations can cooperate, communicate, coordinate and collaborate in the event of a disaster.

## 211 RESOURCE LINE

An easy-to-remember phone number that links people in need to relevant information in the complex maze of human services with an accurate database of public and community-based resources, even during a disaster.

## SUMMER OF SERVICE

Specifically designed for ages 12 to 18, the program has five human services projects each summer. Projects focus on a group of community members who are most in need and illustrate the value of serving others.

## CRISIS CHAT ONLINE

An online chat for anyone who is going through a difficult time, having thoughts about suicide or just needs to talk. It is confidential and operated by professionally-licensed crisis intervention specialists.

## 833.TXT.TEEN

A texting platform for teens serving anyone ages 13-22, in any type of crisis. It provides confidential access to 24/7 support from professionally-licensed counselors.

## VITA - VOLUNTEER INCOME TAX ASSISTANCE

IRS certified United Way volunteers offer free income tax prep for low-income individuals, persons with disabilities, the elderly and limited English speaking taxpayers.

## LITERACY KITS

With assistance from school systems, the kits are distributed to children across Southwest Louisiana. Each kit includes books and volunteer-designed props or games, to make the reading interactive.

## WRITESTART PROJECT

This program provides basic school supplies, admin fees and necessary support to children and teachers in need. Providing supplies year-round ensures teachers and students can focus on learning.

Where the goal is to help those



# — Resources

## Meeting critical health & human services needs

United Way of Southwest Louisiana is committed to our mission of Positive Community Impact and will continue to make wise investments of resources, address the most important issues facing our community, and provide accountability for donations made by donors.

### THE PATH HOME

Program which facilitates the matching of resources with the individuals and families needing assistance with issues surrounding homelessness. The goal is to help those affected move toward stable housing and a successful future.

### SINGLECARE PRESCRIPTION DISCOUNT CARD

A partnership focused on improving the health of individuals, families and communities by helping to make prescription medications more affordable.

### UNITED AGAINST CHILD HUNGER

Weekend Food Packs are created for the Summer Feeding Programs in Southwest Louisiana giving food-in-secure children access to easy-to-eat foods over the weekend.

### CAL-PRI - CALCASIEU PRISONER REENTRY

This vital program is a link between formerly incarcerated individuals and the resources available to help them succeed with a new life in the job market and community.

### MATCHED SAVINGS

This program teaches saving and budget habits for those working toward a home purchase. Participants are encouraged to build a down payment with a dollar match upon graduation.

### DOLLY PARTON'S IMAGINATION LIBRARY

In partnership with donors, children are provided 1 book a month from birth until age 5 at no cost to the family. Families start a home library to encourage literacy from a young age.

Where there is great need, our  
resources work quickly and  
effectively to help the most vulnerable.

**COLLECTIVE IMPACT** is the idea that large-scale social change can only be achieved when all stakeholders work together, instead of in competition or isolation.

# MISSION

# COMMUNITY IMPACT

For 81 years, United Way of Southwest Louisiana has been committed to building strong, successful families and strengthening our community. When you join the United Way team, you're supporting a powerful movement to impact the region's most pressing health and human service needs.



We are the social services safety net for our community; creating long-lasting change.

Our ability to swiftly address critical needs such as bedding for the sheriff's department to use for young victims of sexual violence or brand new furniture for flood victims is due to global partnerships and donor trust.

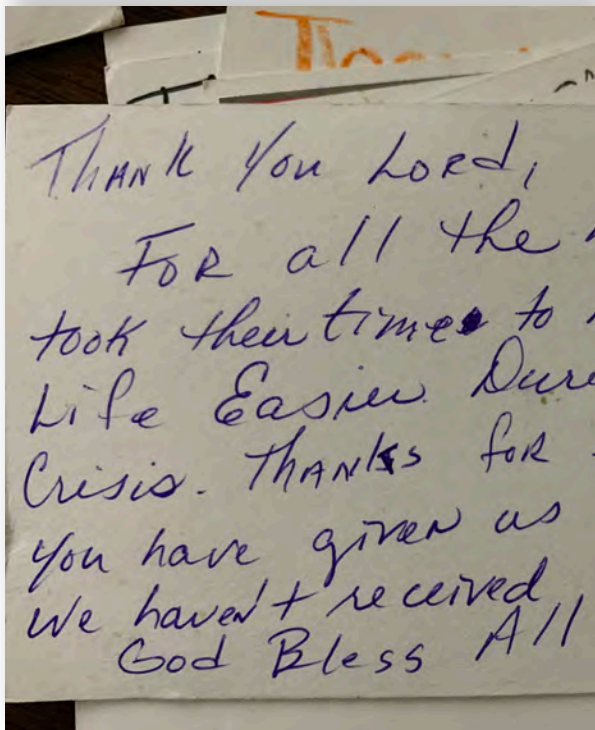
We look at the big picture - embracing the entire circle of life focusing on children and youth, families and neighborhoods, seniors and people rebuilding their lives.

The 211 resource line is the United Way of Southwest Louisiana Initiative that allows us to see what critical resources are needed in the community. We can take action to meet the need.

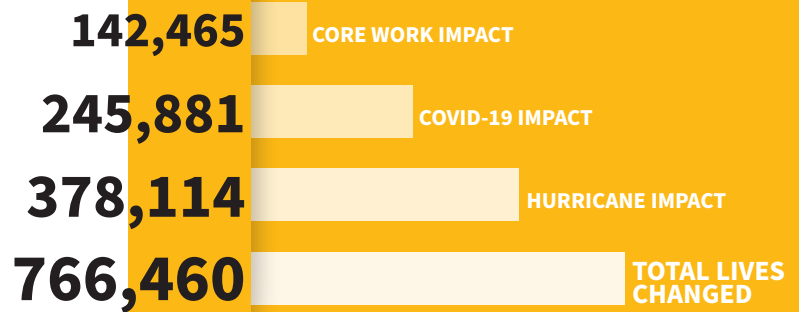
# 2020

*I've never seen such great people who came in and reached out to the lowest in the community. They had open arms to help us, smiling and gave us what we need. They even asked if we needed more.*

Jerry Ann Vital  
Hurricane Relief Center visitor

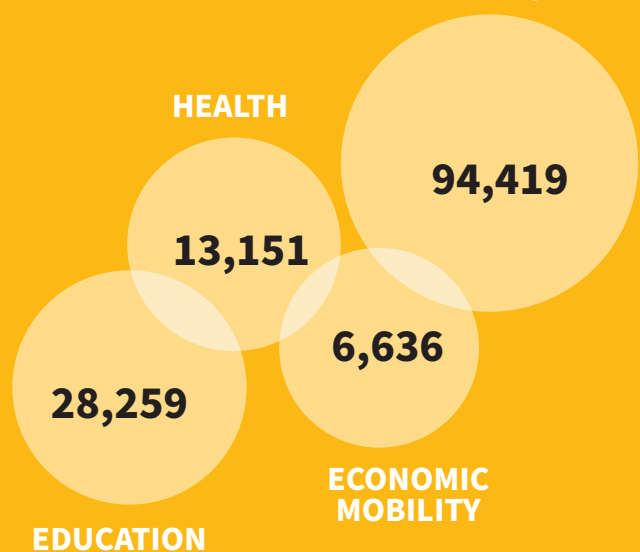


## 2020 Community Impact



### 2020 CORE WORK

### BASIC NEEDS





## **UNITEDWAYSWLA.ORG**

 [facebook.com/unitedwayofswla](https://facebook.com/unitedwayofswla)

 [@unitedwayswla](https://instagram.com/unitedwayswla)

 [@unitedwayofswla](https://twitter.com/unitedwayofswla)

 [youtube.com/unitedwayofswla](https://youtube.com/unitedwayofswla)

 [linkedin.com/unitedwayswla](https://linkedin.com/unitedwayswla)

**We look at the big picture - embracing the entire circle of life focusing on children and youth, families and neighborhoods, seniors and people rebuilding their lives.**